

BRUSHLESS DIRECT DRIVE

DIRECT DRIVE 3,500W CEDAR MOTOR

WITH INTEGRATED CONTROLLER

REPLACES SMALL 2-5HP INTERNAL COMBUSTION ENGINES & CLUTCH MECHANISM

Provides full torque from zero speed.

MOTOR AND CONTROLLER ARE FULLY INTEGRATED

To simplify IC engine replacement.

WORKS SEAMLESSLY WITH ASI SMART BATTERY SOLUTIONS

For improved versatility and safety.



FEATURES

POWER & TORQUE

Up to 20Nm of Torque makes this motor suitable for almost all IC engine replacement applications.

NO MAINTENANCE

The Direct Drive Sealed Motor is reliable & easy to maintain.

EFFICIENT

Direct Drive Brushless Permanent Magnet Motor provides up to 92% efficiency.

CONTROL & POWER

Highest power density in the industry.

EASILY FIRMWARE CONFIGURED

For a wide range of applications.

SILENT AND SMOOTH

Premium bearings and other high quality components make for quiet and smooth operation.

SIMPLE WIRING WITH CANBus

Facilitates a single connector solution.

MACHINE WOUND STATOR

Ensures that every Motor conforms to the same high Standard.

BUILT IN TEMPERATURE & CURRENT SENSORS

Continually monitors the Motor & Controller to protect from overheating & damage.



Engineered in Canada



**ACCELERATED
SYSTEMS INC.™**

519.342.2507 |

www.accelerated-systems.com

01.2020 © Accelerated Systems Inc. V.1.0

Specifications subject to change without notice.

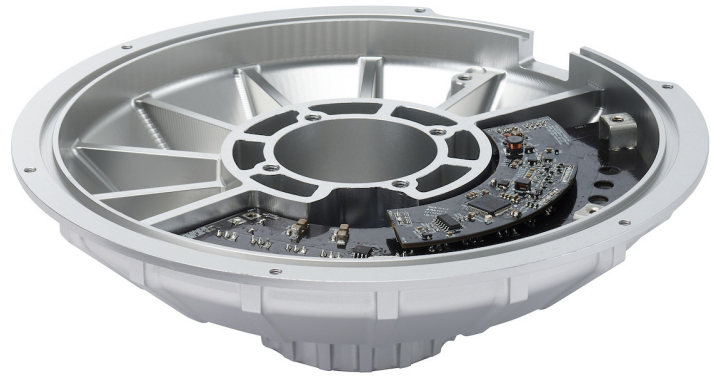
BRUSHLESS DIRECT DRIVE

DIRECT DRIVE 3,500W CEDAR MOTOR WITH INTEGRATED CONTROLLER



SPECIFICATIONS

MOTOR TYPE	Brushless PM Direct Drive
VOLTAGE	48V-72V
OUTPUT POWER (HP)	5HP (3.5KW)
TORQUE (MAX)	20 Nm
MAX RPM (@ VOLTAGE)	4000 RPM @48V
MAX. EFFICIENCY	92%
CONNECTOR	Anderson SBS75X
APPLICATIONS	High Torque, High Speed
FRAME CONSTRUCTION	Aluminum
ELECTRIC TERMINAL CONSTRUCTION	Custom cables
PHASE RESISTANCE	4 milli-ohms
AMBIENT TEMPERATURE	up to +40°C



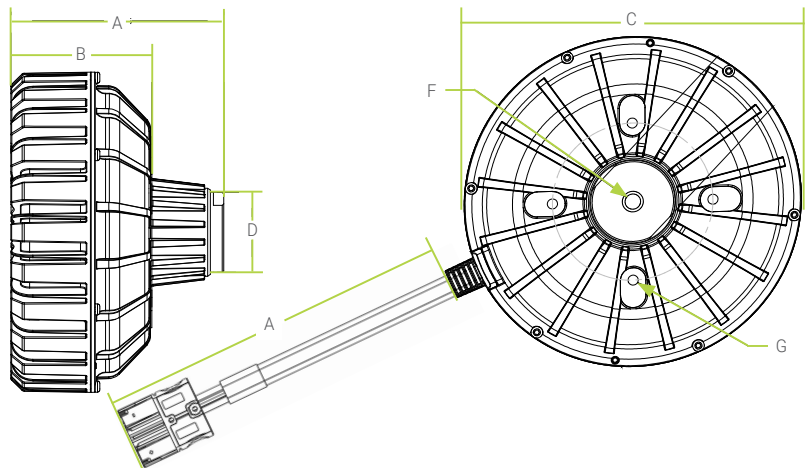
OEM APPLICATIONS

Pressure Washers Pumps
Lawn Mower Decks
Transaxle Drive

MOTOR DIMENSIONS

		MM	IN
BODY LENGTH (W/SHAFT)	A	146	5.7
MAIN BODY	B	96.5	3.78
MOTOR DIAMETER	C	224	8.82
SHAFT DIAMETER	D	56	2.20
CABLE LENGTH (W/CONNECTOR)	E	500	19.69
CENTER SHAFT HOLE	F	M12 X 1.75	
MOUNTING HOLES (X4)	G	M8 X 1.25	
MOTOR WEIGHT		7 kg	15 lb

*DIMENSIONS ARE +/- .01" OR



ASI ACCELERATED
SYSTEMS INC.™

519.342.2507

| www.accelerated-systems.com

12.2019 © Accelerated Systems Inc. V.1.0

Specifications subject to change without notice.